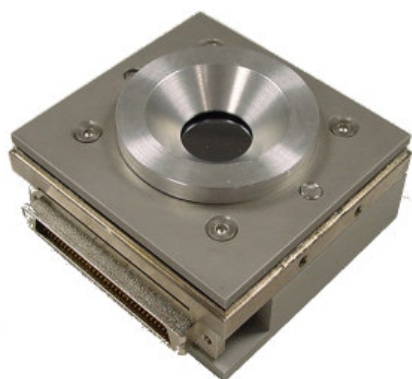
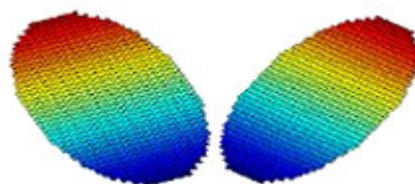


MIRAO 52 D

A new generation mini deformable mirror



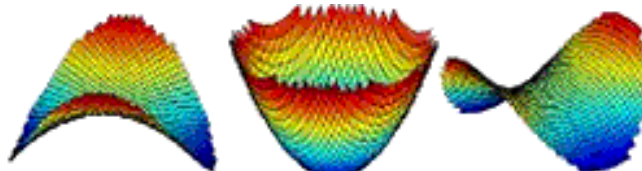
Surface quality rms (actively flattened) : **5 nm**
 Maximum Wavefront Correction : **100 μm**
 High spatial frequency correction : **52 actuators**



Integrated
Tip/Tilt

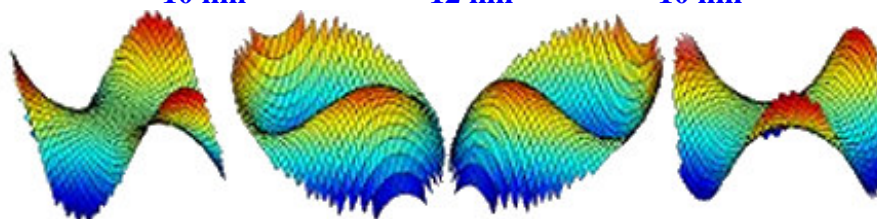
MWFC*
RWFE**

100 μm 100 μm
10 nm 10 nm



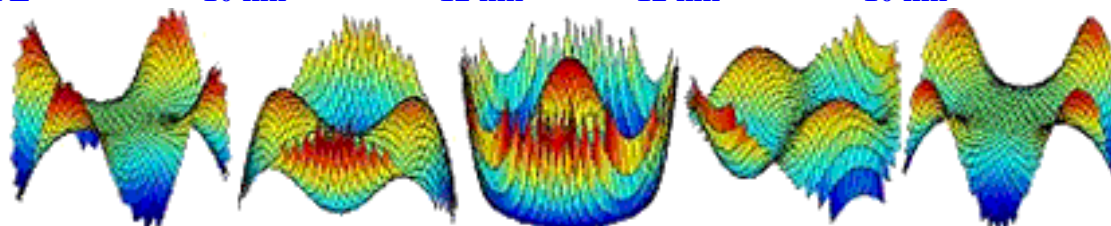
MWFC
RWFE

55 μm 75 μm 55 μm
10 nm 12 nm 10 nm



MWFC
RWFE

12 μm 15 μm 15 μm 12 μm
10 nm 12 nm 12 nm 10 nm



MWFC 10 μm 5 μm 8 μm 5 μm 10 μm
RWFE 10 nm 20 nm 15 nm 20 nm 10 nm

* MWFC : Maximum wavefront correction on the selected Zernike (PV typical values)

**RWFE : Residual wavefront error at 20% of the dynamic range (rms typical values)

Useful diameter	13.5 – 15 mm
Linearity	> 95%
hysteresis	< 1%
Required voltages	± 1 V max.

coating	Al, Ag, dielectric (option)
Bandwidth	250 Hz max.
Power consumption	50 Watts max.
Dimensions/Weight	70 x 66 x 35 mm ³ / 530 g